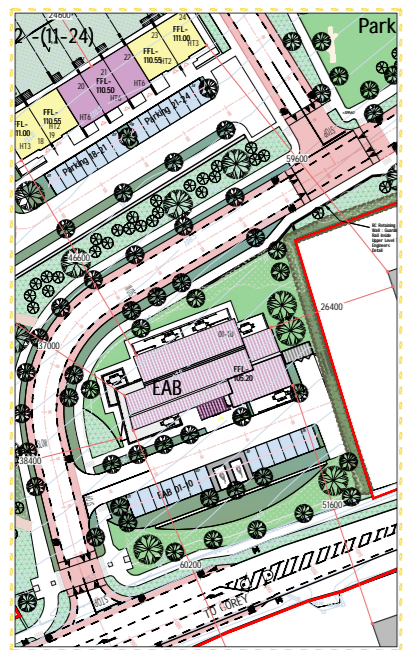
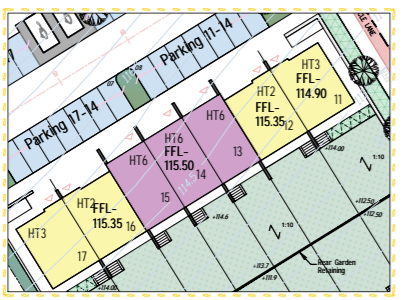




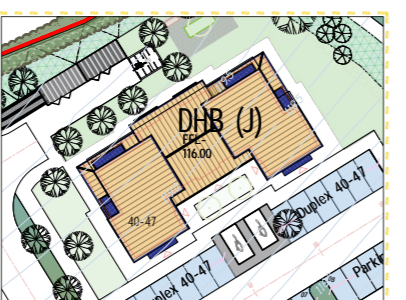
SHD LAYOUT LANDS AT KILNAHUE, GOREY - 421 UNITS SITE LAYOUT 1-1000



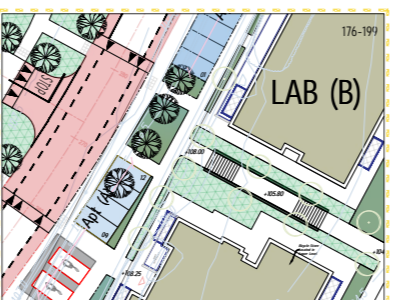
Entry Apartments
10 Units
(EAB) No. 01 - 10



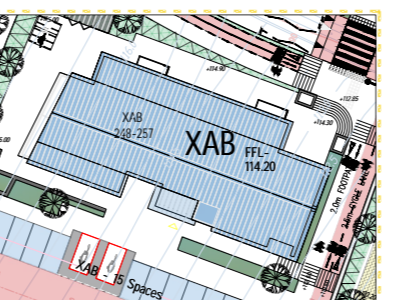
Housing Blocks
14 Units
(HB-2) 11-24



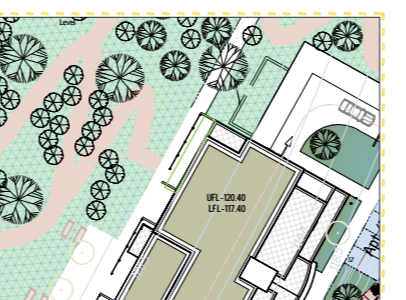
Small Block Duplex
8 Units
DHB No. 40 - 47



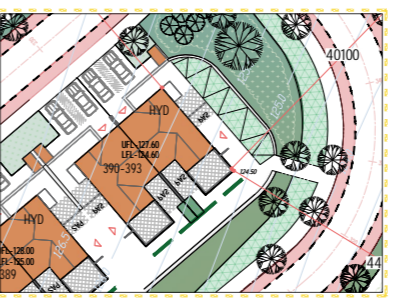
Lower-Avenue
Apartments
96 Units
(LAB A-B-C-D) 152-247



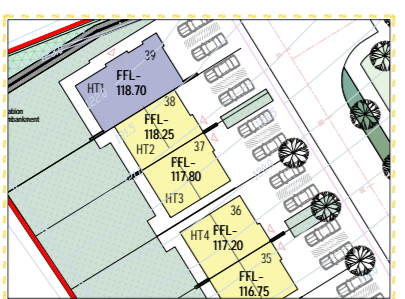
Kilnahe Exit Building
2 No. Community Rooms
2 No. Retail Units
10 No. Apartment Units
(XAB No 248 - 257)



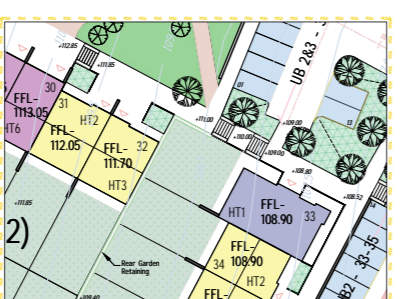
Mid-Avenue
Apartments
112 Units
(MAB E-F-G-H) 258 - 269



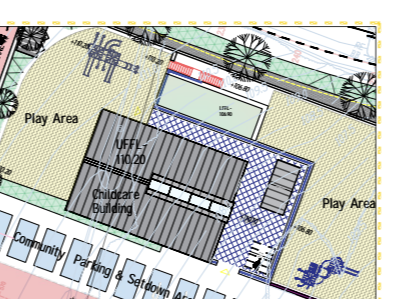
Park Avenue
Hybrid Duplex
40 Units
HYD No. 370 - 409



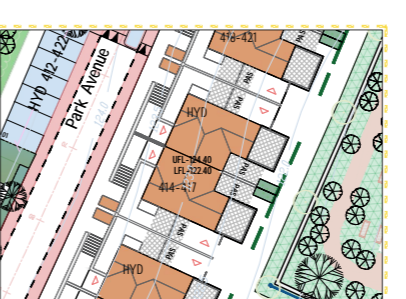
Housing Blocks
15 Units
(HB-1) 25-39



Urban & Block Housing
104 Units
(UBH 1 - 4) 01-104



Kilnahe Childcare Building



Park Avenue
Hybrid Duplex
12 Units
HYD No. 410 - 421

| SHD APPLICATION - GERARD GANNON PROPERTIES - LANDS AT KILNAHUE GOREY | | | | | | | | | | | |
|--|------------|---------------|----------------|------------|---------------|----------------|------------|---------------|----------------|------------|---------------|
| RESIDENTIAL MIX AUDIT | | | | | | | | | | | |
| Housing Units - Duplexes & Apartments - 421 Units | | | | | | | | | | | |
| Residential Mix | | | | | | | | | | | |
| Unit Type | Count | Area (sqm) | Area (sqft) | Count | Area (sqm) | Area (sqft) | Count | Area (sqm) | Area (sqft) | Count | Area (sqm) |
| Entry Apartments Block (EAB) | 10 | 1,000 | 10,764 | 10 | 1,000 | 10,764 | 10 | 1,000 | 10,764 | 10 | 1,000 |
| Housing Blocks (HB) | 29 | 2,850 | 30,771 | 29 | 2,850 | 30,771 | 29 | 2,850 | 30,771 | 29 | 2,850 |
| Small Block Duplex (DHB) | 8 | 800 | 8,581 | 8 | 800 | 8,581 | 8 | 800 | 8,581 | 8 | 800 |
| Lower-Avenue Apartments (LAB) | 96 | 9,600 | 103,632 | 96 | 9,600 | 103,632 | 96 | 9,600 | 103,632 | 96 | 9,600 |
| Kilnahe Exit Building (XAB) | 10 | 1,000 | 10,764 | 10 | 1,000 | 10,764 | 10 | 1,000 | 10,764 | 10 | 1,000 |
| Mid-Avenue Apartments (MAB) | 112 | 11,200 | 120,638 | 112 | 11,200 | 120,638 | 112 | 11,200 | 120,638 | 112 | 11,200 |
| Park Avenue Hybrid Duplex (HYD) | 52 | 5,200 | 56,168 | 52 | 5,200 | 56,168 | 52 | 5,200 | 56,168 | 52 | 5,200 |
| Total | 217 | 21,700 | 232,108 | 217 | 21,700 | 232,108 | 217 | 21,700 | 232,108 | 217 | 21,700 |

Sheet 104 1-1000 @A1

Connolly Architects RIAI